

50 Bertram "Sans Souci"



full_starboard_profile.jpg



full_aft.jpg



flybridge1.jpg



flybridge2.jpg



flybridge3.jpg

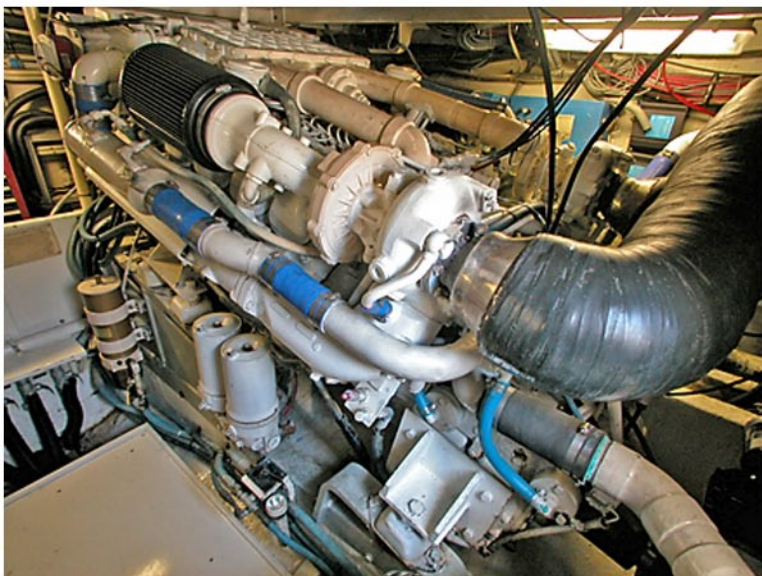


cockpit.jpg

50 Bertram "Sans Souci"



engineroom1.jpg



engineroom2_starboard_engine.jpg



engineroom3_port_engine.jpg



salon1.jpg



salon2.jpg



salon3.jpg

50 Bertram "Sans Souci"



galley.jpg



guest_stateroom.jpg



guest_head.jpg



master_stateroom.jpg



master_head.jpg